



KSIF, communicating with the world
through Korean language and culture

Contents

1. The King Sejong Institute Foundation (KSIF)

About the KSIF	02
History	04
Organization	05
Current status of the KSIs	06

2. Major Projects

KSIF projects at a glance	10
---------------------------	----

Designation and operation of the KSIs

Designation of new KSIs	12
Operational support for the KSIs	15
Operation of Online KSI	16

Support for Korean language education

Providing online/offline curriculum	18
Operation of Nuri-Sejong Hakdang	21
Strengthening the capabilities and professionalism of teachers	22

Providing Korean cultural experiences

Support for Korean culture-related programs	24
---	----

Promotions and contributions for KSIs

Promotion of the KSIs	26
Receipt of contributions	28

1

The King Sejong Institute Foundation

The King Sejong Institute Foundation (KSIF) is a bridge between Korea and the rest of the world through the King Sejong Institutes (KSIs), and creates unique Korean experiences within your reach.

About the KSIF

History

Organization

Current status of the KSIs



Building a world where dreams are fulfilled through Korean language and culture

The KSIF is a public organization under the Ministry of Culture, Sports and Tourism [of the Republic of Korea] which oversees programs that promote the Korean language and culture in other countries.

*The KSIF was established based on Article 19, Section 2 of the [Framework Act on Korean Language]

The Korean language currently ranks 14th in terms of total number of speakers among the languages of the world.

Building on this foundation, the KSIF is taking the lead in helping non-native Korean speakers realize their dream of speaking in Korean and giving them opportunities to enjoy Korean cultural experiences.



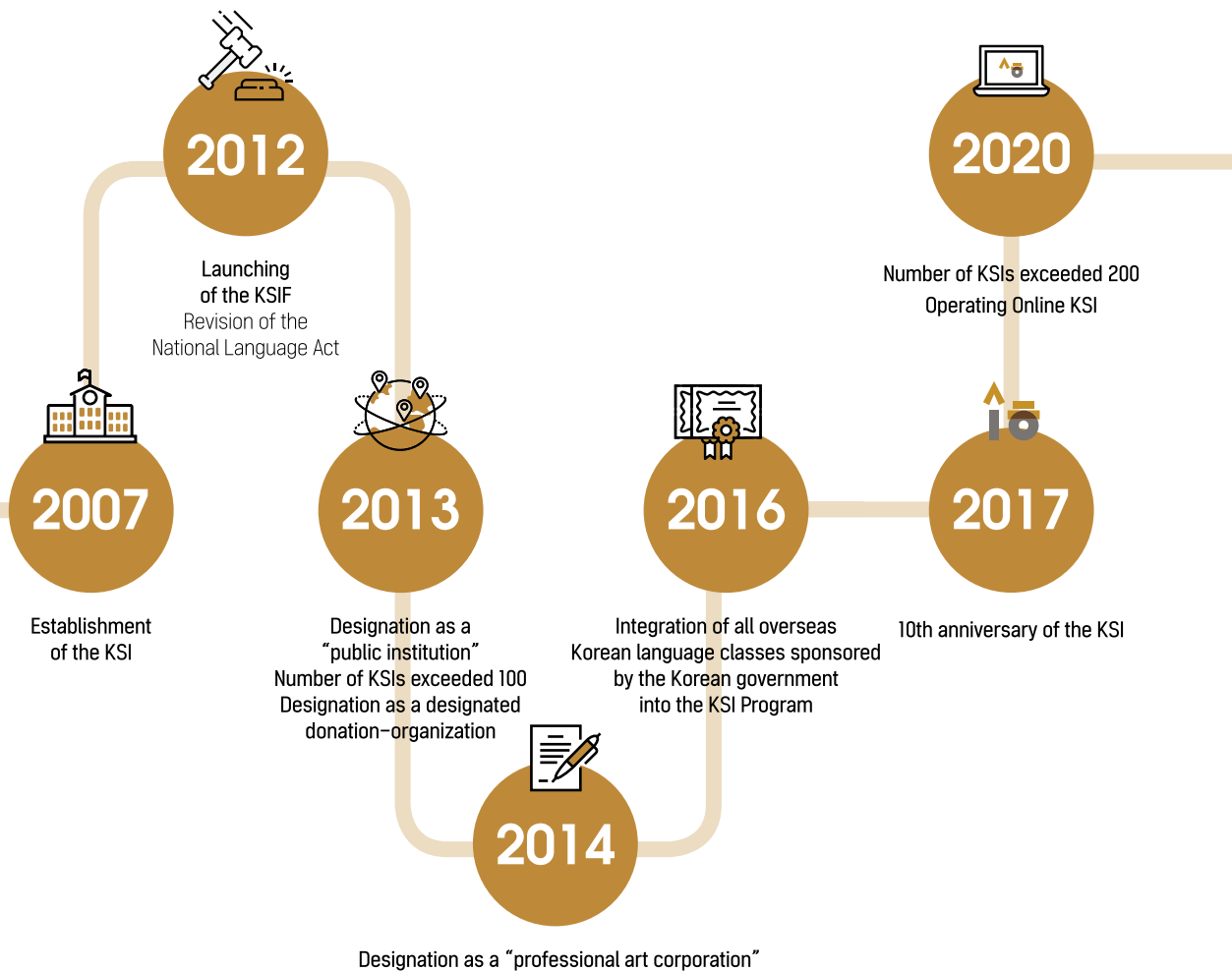
Kang Hyounhwa
President, King Sejong Institute Foundation

강연화



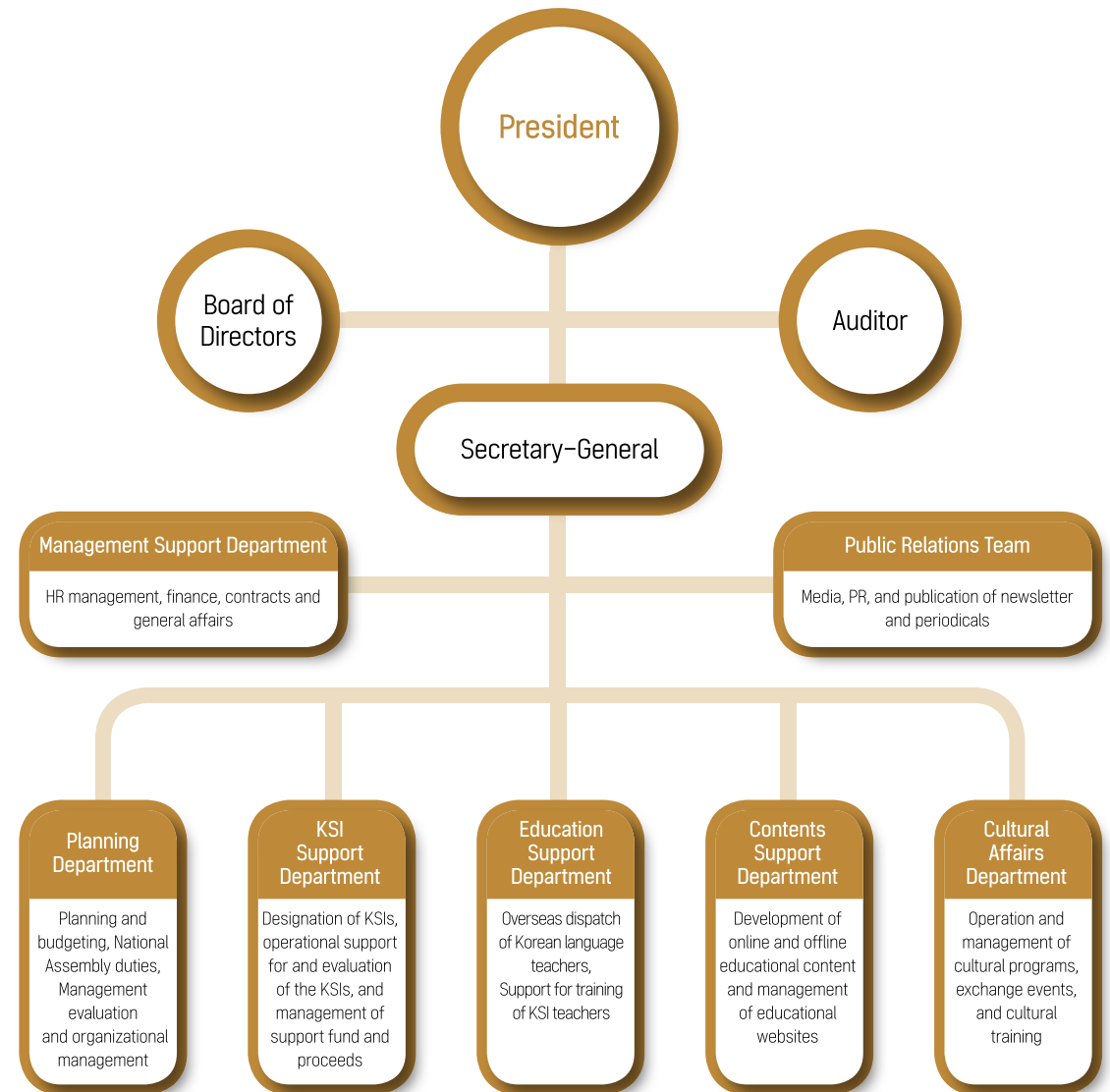
The KSI is now leading the effort to spread the Korean language and culture worldwide!

The KSIF is making friends around the world by providing Korean language classes and promoting Korean culture. All the small steps we have taken so far have enabled the foundation to develop a leading Korean language and culture education brand that is trusted worldwide.



The KSIF is creating the world that King Sejong envisioned!

In response to the growing demand for Korean language education for non-native Korean speakers, the KSIF will continue to support the KSIs to provide Korean language education and Korean cultural experiences around the world.



KSIs Around the World

213 KSIs in 76 Countries

As of July 2020

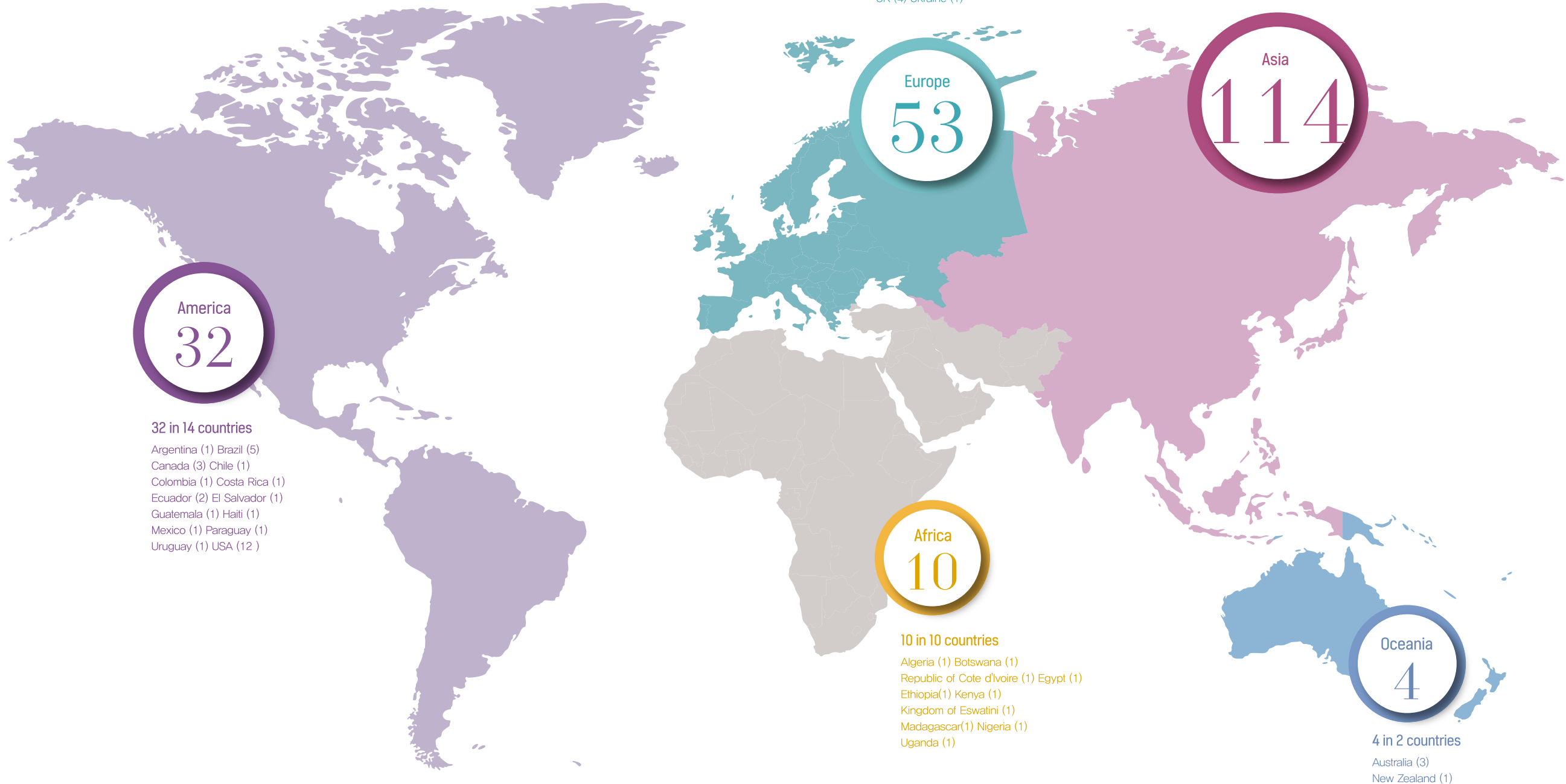
“Even at this moment, KSIs all over the world are filled with the excitement of non-native speakers who want to learn the Korean language and experience Korean culture.”

53 in 26 countries

Armenia (1) Belarus (1) Belgium (2)
 Bulgaria (1) Croatia (1) Czech Republic (1)
 Denmark (1) Estonia (1) France (3)
 Georgia (1) Germany (3) Hungary (2)
 Italy (1) Latvia (1) Lithuania (2)
 Poland (2) Portugal (1) Rumania (1)
 Russia (11) Serbia (1) Slovakia (1)
 Spain (3) Sweden (1) Turkey (5)
 UK (4) Ukraine (1)

114 in 24 countries

Azerbaijan (1) Bahrain (1) China (28)
 Cambodia (1) India (7) Indonesia (6)
 Iran (2) Japan (17) Jordan (1) Kazakhstan (3)
 Kyrgyz Republic (5) Malaysia (2) Mongolia (3)
 Myanmar (1) Pakistan (1) Philippines (5)
 Laos (2) Sri Lanka (2) Tajikistan (1)
 Thailand (5) Turkmenistan (1) UAE (2)
 Uzbekistan (2) Vietnam (15)



America
32

32 in 14 countries

Argentina (1) Brazil (5)
 Canada (3) Chile (1)
 Colombia (1) Costa Rica (1)
 Ecuador (2) El Salvador (1)
 Guatemala (1) Haiti (1)
 Mexico (1) Paraguay (1)
 Uruguay (1) USA (12)

Europe
53

Asia
114

Africa
10

10 in 10 countries

Algeria (1) Botswana (1)
 Republic of Cote d'Ivoire (1) Egypt (1)
 Ethiopia (1) Kenya (1)
 Kingdom of Eswatini (1)
 Madagascar (1) Nigeria (1)
 Uganda (1)

Oceania
4

4 in 2 countries

Australia (3)
 New Zealand (1)

2

Major Projects

The KSIF spreads Korean language and culture all around the world, allowing the world to connect with Korea through the KSIs.

Designation and operation of the KSIs

- Designation of new KSIs
- Operational support for the KSIs
- Operation of Online KSI

Support for Korean language education

- Providing Online/offline curriculum
- Strengthening the capabilities and professionalism of teachers

Providing Korean cultural experiences

- Support for Korean culture-related programs

Promotions and contributions for the KSIs

- Promotion of the KSIs
- Receipt of contributions



Honorary Ambassador
Actor **Lee Minho**

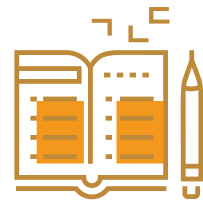
KSIF projects at a glance

As the leading organization for Korean language education and Korean cultural experiences, the KSIF takes on numerous projects.



Designation and operation of KSIs

- Designation of new KSIs > (2007: 13 in 3 countries → 2020: 213 in 76 countries)
- Operation/support of KSIs
- Operation/support of Online KSI
- Diverse scholarship opportunities



Support for Korean language education

- Curriculum development/distribution
- Development/distribution of textbooks and educational materials
 - > Sejong Korean (Vols. 1-8), Sejong Korean Culture (Vols. 1-2), Sejong Korean Conversation (Vols. 1-4), Business Korean(Vols. 1-2), Korean Language for Travelers, KSI Basic Korean for Marriage-Immigrants(Vols. 1-2)



Reinforcement of teacher expertise

- Dispatch of Korean language teachers overseas (140 sent in 2019)
- Operation of Korean Language Teacher Training Course (Cumulative no. of graduates as of 2019: 582)
- Retraining of KSI teachers
 - > Seven online curricula, regional teacher training workshops



Establishing networks for cooperation

- Organization of the World Korean Educators Conference
- Organization of regional workshops



Support for programs that introduce Korean culture to foreigners

- Organization of lectures on Korean culture > King Sejong Culture Academy (held at 35 KSIs in 2019)
- Dispatch of "culture interns" and culture-related experts (2019: 41 culture interns, 132 experts)
- Development and distribution of programs that expose foreigners to Korean culture and related materials
- "Korean cultural Experience Program For KSI Learners"



Support for online education

- Operation of Nuri-Sejong Hakdang (www.sejonghakdang.org) (Total subscribers exceeds 200,000)
- Development/distribution of Korean learning apps (7)
 - > Nuri-Sejong Hakdang and three Korean language learning applications have received the "Good Content Service" certification.



Promotions and contributions for the KSIs

- Appointment of KSI's honorary ambassadors
- Publication of periodicals
 - > Publication and distribution of biannual newsletter "Sejong Hakdang" and online monthly newsletter "KSIF News"
- Operation of social network service (SNS)
- Inducement of sponsorship for KSIs



KSIF, designating and operating KSIs around the world



Designation of new KSIs

The KSIF designates and supports the operation of KSIs around the world to provide easy access to the Korean language and culture for foreigners who want to study Korean as a second language.

Classification of the KSIs

General KSIs

Independent KSIs

This type of KSI is exclusively operated by local organizations such as universities and NGOs.

Affiliated KSIs

These KSIs are jointly operated by local and Korean operators (including overseas Korean missions) based on cooperation agreements.

KSI Cooperation Center

KSI Cooperation Centers are designated and operated based on MOUs with foreign embassies and legations, local governments, public institutions, and corporations.

KSI Korean Cultural Centers

The Korean language programs run by the Korean Cultural Center are designated as KSIs and receive support for their operation from the KSIF.

KSI Education Centers

The Korean language programs run by the Korean Education Center are designated as KSIs and receive support for their operation from the KSIF.



KSI Center

The KSIF directly sets up and operates some KSIs to serve as regional hubs.

Designation process

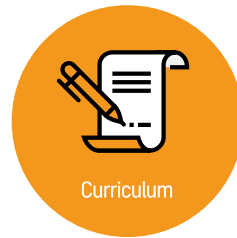


Qualification for designation



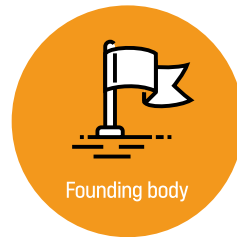
Operation

- Appoint head of KSI to oversee and manage the institute
- One or more operating staff required



Curriculum

- Open at least 2 Korean language courses
- Operate classes for at least 30 weeks per year
- Offer a at least 120-minute-long Korean language class per week



Founding body

Local institute

- Government organization in the local country
- University (or graduate school) or university-affiliated institute in the local country
- Local non-profit or corporate organization officially registered in the local country

Affiliated institutes

- Korean government organization or local government
- Korean university (or graduate school) or university-affiliated institute



Facility

Lecture room

2 or more lecture rooms able to seat a minimum of 10 people

Reference library (available to share)

Place for viewing and storing information on the Korean language and culture

Administrative office

Administrative office used for operating and managing the KSI



Korean language faculty

Must satisfy at least one of the following conditions

- Holder of "Korean Language Teacher Certificate"
- Completed a Korean teacher training course
- Candidates with a bachelor's or higher degree and has at least one year of Korean language training experience

Operational support for the KSIs

Support funds

The KSIF offers a wide range of support to promote the stable provision of Korean language education and administrative operation of the KSIs. Major areas of support include: operating budgets for local KSIs, dispatch of certified Korean language teachers, Support for specialized educational content· environment improvement per KSI, textbooks/equipment/other education content, and scholarships.

Funding is provided to ensure the effective operation of the KSIs, taking into consideration such factors as the operational scale of each KSI prices and labor costs in the country in which each KSI is located.



Dispatch of Korean language teachers

The KSIF dispatches certified and experienced Korean language teachers to reduce inter-regional differences in the quality of Korean language education while also providing a higher quality of Korean language education.

Support for customized educational content and environmental improvement for each KSI

The KSIF provides specialized educational programs that are designed to suit the needs of individual KSIs (KSI Korean language classes for obtaining a visa from the Ministry of Justice, outside lectures given by KSI teachers, etc.). It also enhances learner convenience by providing funding for KSI facility improvement.

Provision of materials, books, and Korean Wave (Hallyu) content

The KSIF provides various materials necessary for Korean language and culture education, including textbooks, books, and films related to Korean culture, and teaching aids such as traditional Korean musical instruments.



Diverse scholarship opportunities

To motivate KSI students around the world to learn, the KSIF operates a wide range of scholarship programs. Every year, those who perform well at the Korean Speech & Writing Contest held by their affiliated KSI are given the opportunity to take Korean classes at a university in Korea.



The KSIF offers Korean language and culture courses online. Online KSI welcomes you.



Operation of Online KSI www.iksi.or.kr

The KSIF operates the Online King Sejong Institute (Online KSI) to give anyone the opportunity to learn Korean, including not only KSI students but also anyone who is interested in studying Korean.

Online KSI enables distance learning of Korean by providing online level tests, level-specific Korean language courses, and individualized learning management conducted by online teachers.

KSI e-Class

This course provides distance learning from KSIs around the world. It allows KSI students to do distance learning and practice Korean with their KSI teachers and classmates.

Cyber Korean courses

These are regular courses in which the learner studies with online teachers. With a simple registration procedure, anyone can take Korean courses without having to attend the KSI in person. The online teachers manage the learner's academic progress for the duration of the course.

Cyber Korean culture courses

These courses cover a wide range of Korean cultural phenomena, such as Taekwondo, Korean cuisine, and K-pop. Experts from diverse fields teach online lectures on theory and practice.

Self-learning Korean courses

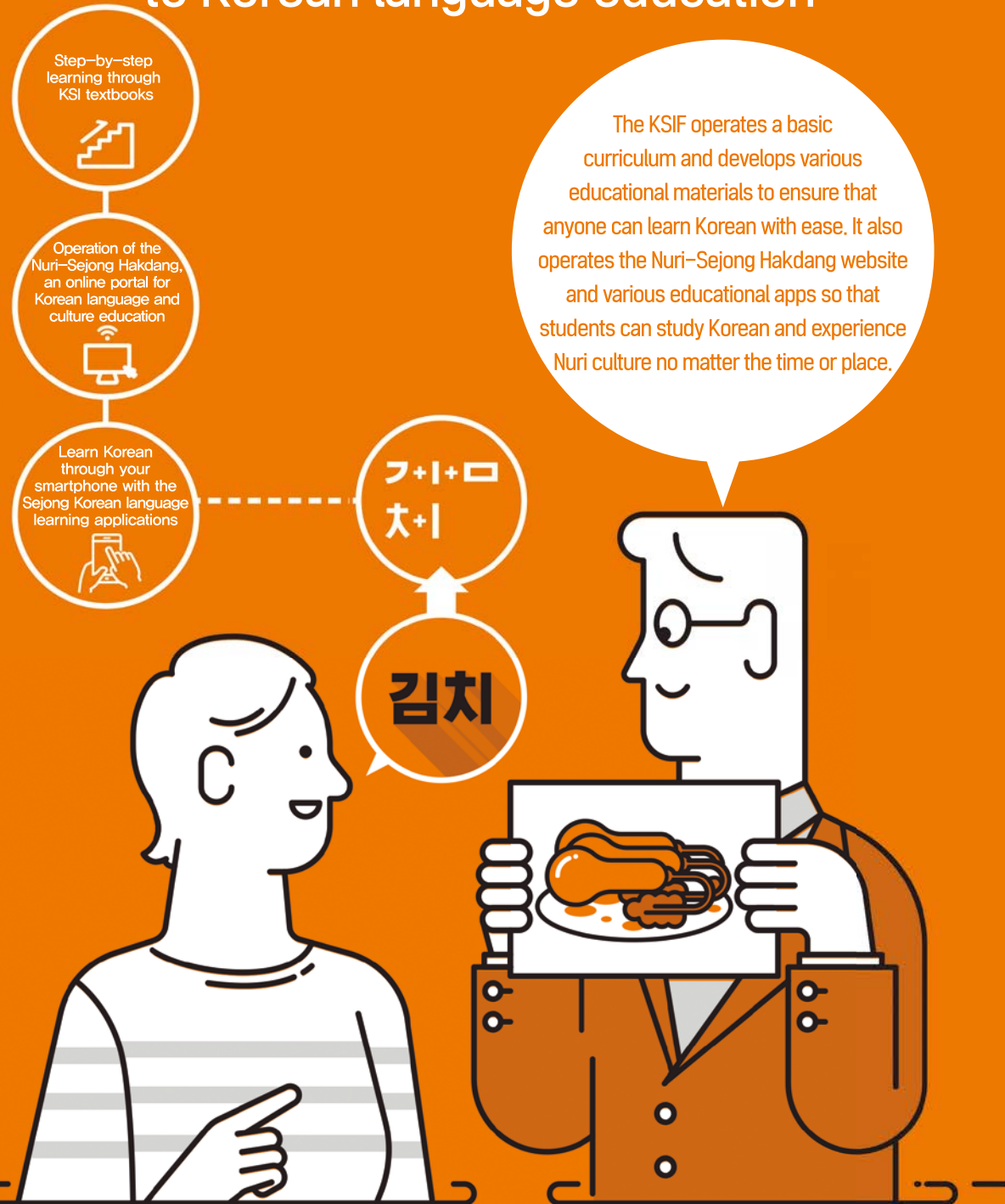
This course is open on a 24-hour basis so that the learner can preview or review course content on their own. Korean language courses of various levels are available, from "Sejong Korean 1" to "Business Korean."

Collaboration e-Class

This online course teaches Korean language through collaborations between the KSIF and institutions in related fields. Each learning program combines the KSIF's online contents with the specialty of the partner institutions.



KSIF support for a systematic approach to Korean language education



Providing online/offline curriculum

The KSIF develops and distributions a Korean language curriculum and textbooks to enable all KSIs around the world to provide educational services of high quality to all students. Especially, **"Nuri-Sejong Hakdang"** offers Korean language and culture contents for teachers and students.

King Sejong Institute: Basic curriculum

< Curriculum >	< Textbooks >		
Level 1 Beginner 1	Sejong Korean 1	Sejong Korean Conversation 1	Sejong Korean Culture 1
	Sejong Korean 2		
Level 2 Beginner 2	Sejong Korean 3	Sejong Korean Conversation 2	Sejong Korean Culture 2
	Sejong Korean 4		
Level 3 Intermediate 1	Sejong Korean 5	Sejong Korean Conversation 3	
	Sejong Korean 6		
Level 4 Intermediate 2	Sejong Korean 7	Sejong Korean Conversation 4	
	Sejong Korean 8		
Level 5 Advanced 1	Chosen by relevant operators		
Level 6 Advanced 2	Chosen by relevant operators		



Development of textbooks



Sejong Korean (Vols. 1-8)
This textbook is designed to improve students' communication skills (speaking, listening, reading, and writing).



Business Korean (Vols. 1-2)
This textbook is designed to help students learn Korean expressions that can be used in workplaces in Korea.



Sejong Korean Conversation (Vols. 1-4)
This conversation textbook focuses on enhancing learners' Korean speaking abilities in real-world situations.



Korean Language for Travelers
In addition to information on Korean culture, this textbook includes expressions that are useful in various situations that can arise while traveling in Korea.



Sejong Korean Culture (Vols. 1-2)
This textbook on Korean culture aims to help foreigners gain a better understanding of Korea through comparisons with various foreign cultures.



KSI Basic Korean for Marriage-Immigrants (Vols. 1-2)
This educational material is designed to give learners preparing for marriage in Korea practical assistance with various aspects of life here.

Support for smart learning

Apps can be downloaded from the Google Play Store and Apple App Store.



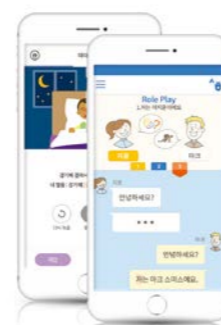
The KSIF is offering smart learning courses via mobile applications that have been designed to help foreigners study Korean anywhere and anytime.



Sejong Korean Vocabulary App (Elementary/Intermediate)
Current Events Korean Vocabulary App



Sejong Korean Grammar App (Elementary)
Sejong Korean Grammar App (Intermediate)



Sejong Korean Conversation / Pronunciation App (Elementary)
Sejong Korean Conversation / Pronunciation App (Intermediate)



Korean Language for Travelers App

Nuri-Sejong Hakdang

www.sejonghakdang.org



Features

A comprehensive website that provides information on the Korean language and culture for learners and instructors alike



Offers spaces for students and teachers
Provides tailored services for students and teachers



Supports 4 different languages
Available in Korean, English, Chinese, and Spanish



General Information about Korean
Provides information on traveling and living in Korea for foreigners

Major contents

Learn Korean

Lectures

Learners can study the KSI's textbooks online on their own.



[Sejong Korean Conversation]

Educational materials

Learners have access to diverse educational materials on the Korean language (by type and level).



[Korean Language for Travelers]

Enjoy Korean culture

Hallyu celebrities, K-pop, travel

Learn about the most recent developments in Korean culture through various videos.



[International distribution of Korean cultural content]

Webtoons and animations

Learn Korean with ease and fun through webtoons and animations.



[KSIs in the World]

Striving to enhance the capabilities and professionalism of Korean language teachers



Reinforcement of teacher expertise

To continuously improve the quality of the Korean language education the KSIs provide, the KSIF strives to enhance the professional capabilities of the teacher. The foundation selects highly qualified and enthusiastic Korean language teachers and sends them to local KSIs and also supports the in-service training of local teachers.

Dispatch of Korean language teacher

Mission of teachers dispatched to the KSIs

The teachers dispatched by the KSIF are expected to promote Korean language education at the KSIs as experts in the planning, operation, and expansion of Korean language courses.

Enquiries | Korean_teacher@ksif.or.kr

Requirements

Level A	Level B	Level C	Level D
Holder of "Korean Language Teacher Certificate" (Above Level 2) With master's or higher degrees in Korean language education and over 8 years (3,200 hours) of experience teaching the Korean language	Holder of "Korean Language Teacher Certificate" (Above Level 2) 3 (1,200 hours) to 8 years (3,200 hours) of experience teaching the Korean language	Holder of "Korean Language Teacher Certificate" (Above Level 3) With 1 (400 hours) to 3 years (1,200 hours) of experience teaching the Korean language	Holder of "Korean Language Teacher Certificate" (Above Level 3) Less than 1 year (400 hours) of experience teaching the Korean language

Teacher training courses

The KSIF offers local teacher training courses to enhance the professional capabilities of local teacher.



Establishment of cooperative networks

The KSIF organizes various events designed to give Korean language educators opportunities to share their experiences and enhance their professional capabilities.



World Korean Educators Conference

The KSIF invites Korean language educators from around the world to Korea to share their knowledge of overseas Korean language education and provides them with opportunities to participate in training sessions to further improve their skills.

Regional workshops

The KSIF invites staff members of KSIs and other Korean language education institutes around the world so that it may seek out ways of mutual cooperation with them for the development of Korean language education in their respective regions.

KSIF, a leader in promoting diversity through Korean culture

Gaining an understanding of Korean culture helps people better understand the Korean language. Recognizing this, the KSIF offers opportunities for foreigners to experience Korean culture within their reach.



Offers Korean culture classes taught by Korean culture interns and experts dispatched by the KSIF

Works to promote a positive image of Korea through culture

Expands students interest in the Korean language by fostering their interest in Korean culture

Support for Korean culture-related programs

In order to promote a positive image of Korea around the world and foster foreigners' interest in the Korean language, the KSIF provides foreigners with opportunities to directly experience diverse aspects of Korean culture that would otherwise be inaccessible to them.

King Sejong Culture Academy

The Sejong Culture Academy offers high-quality cultural education programs that combine guided tours and hands-on experiences of Korean culture. It sends experts on various aspects of Korean culture to KSIs around the world to ensure that all learners have adequate access to and gain a multifaceted understanding of Korean culture.

Dispatch of experts and interns of Korean culture

In cooperation with Korean universities and professional organizations, the KSIF dispatches Korean culture interns and experts to foreign countries, where they give lectures on K-pop, taekwondo, Korean films and television dramas, traditional Korean music, and other aspects of Korean culture and art.

Production and distribution of materials for Korean culture experiences

The KSIF develops a variety of educational materials for Korean culture classes and provides support for the development of materials that allow students to experience Korean culture.

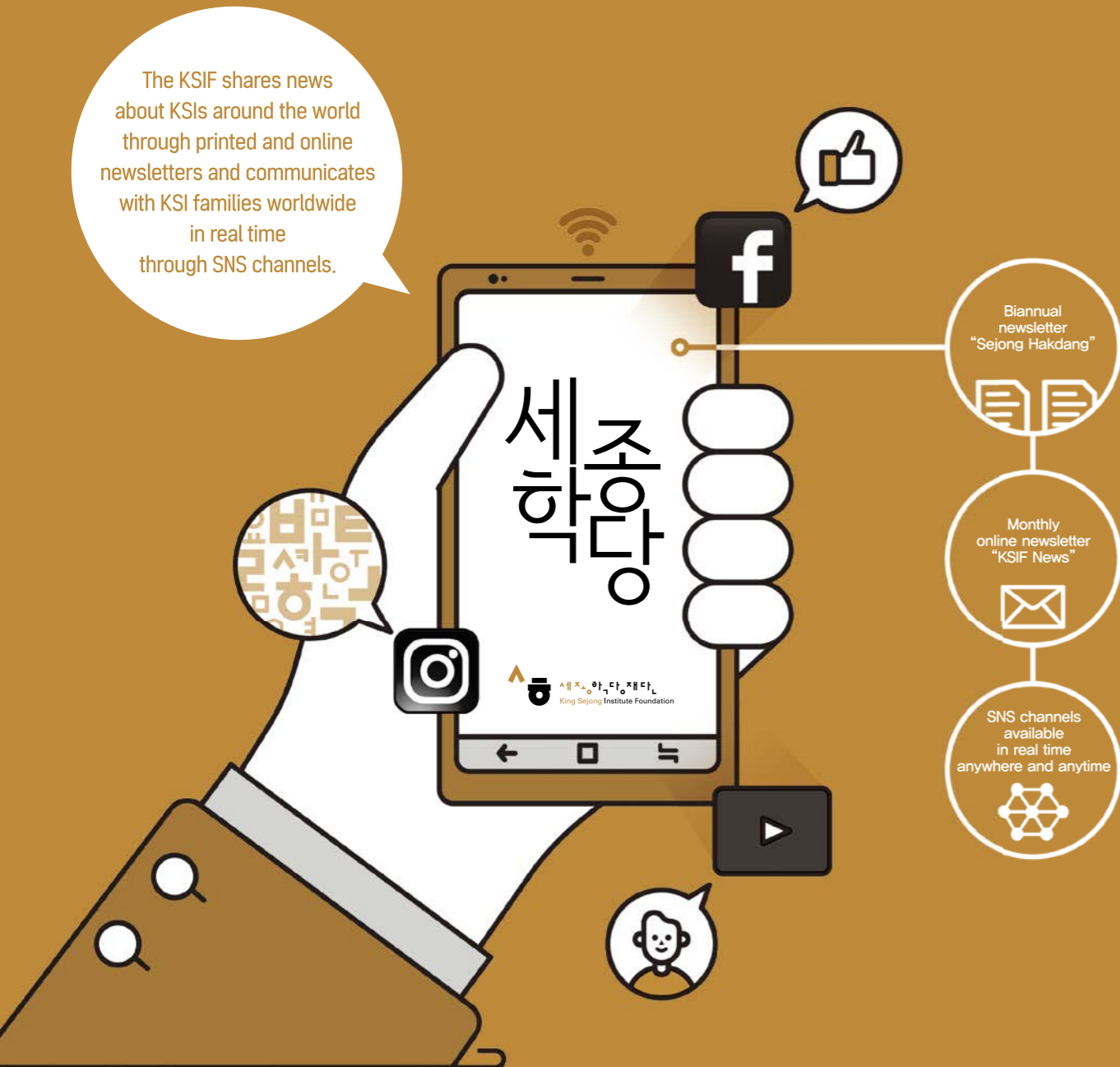
Korean cultural experience program for KSI learners

The KSIF invites outstanding students from KSIs around the world to visit Korea. During their stay, the students, who all have different languages and cultures, are able to learn about Korea together by participating in diverse Korean culture experience programs.



The KSIF fosters closer relationships with people through diverse media channels

The KSIF shares news about KSIs around the world through printed and online newsletters and communicates with KSI families worldwide in real time through SNS channels.



Promotion of the KSIs

The KSIF actively communicates with foreigners interested in the Korean language and culture through various media channels. In addition to publishing online and offline newsletters, the foundation makes active use of social media platforms to reach as many people around the world as possible.

Appointment of honorary ambassadors

The KSIF invites renowned figures in Korean culture and the arts to serve as its honorary ambassadors, who work to raise global awareness of the KSIs and inspire more foreigners to learn the Korean language and culture.

Publication of periodicals

Subscription | press@ksif.or.kr

The KSIF shares with the world news about the foundation and the KSIs in the biannual newsletter "Sejong Hakdang" and the online monthly newsletter "KSIF News."



Newsletter "Sejong Hakdang"



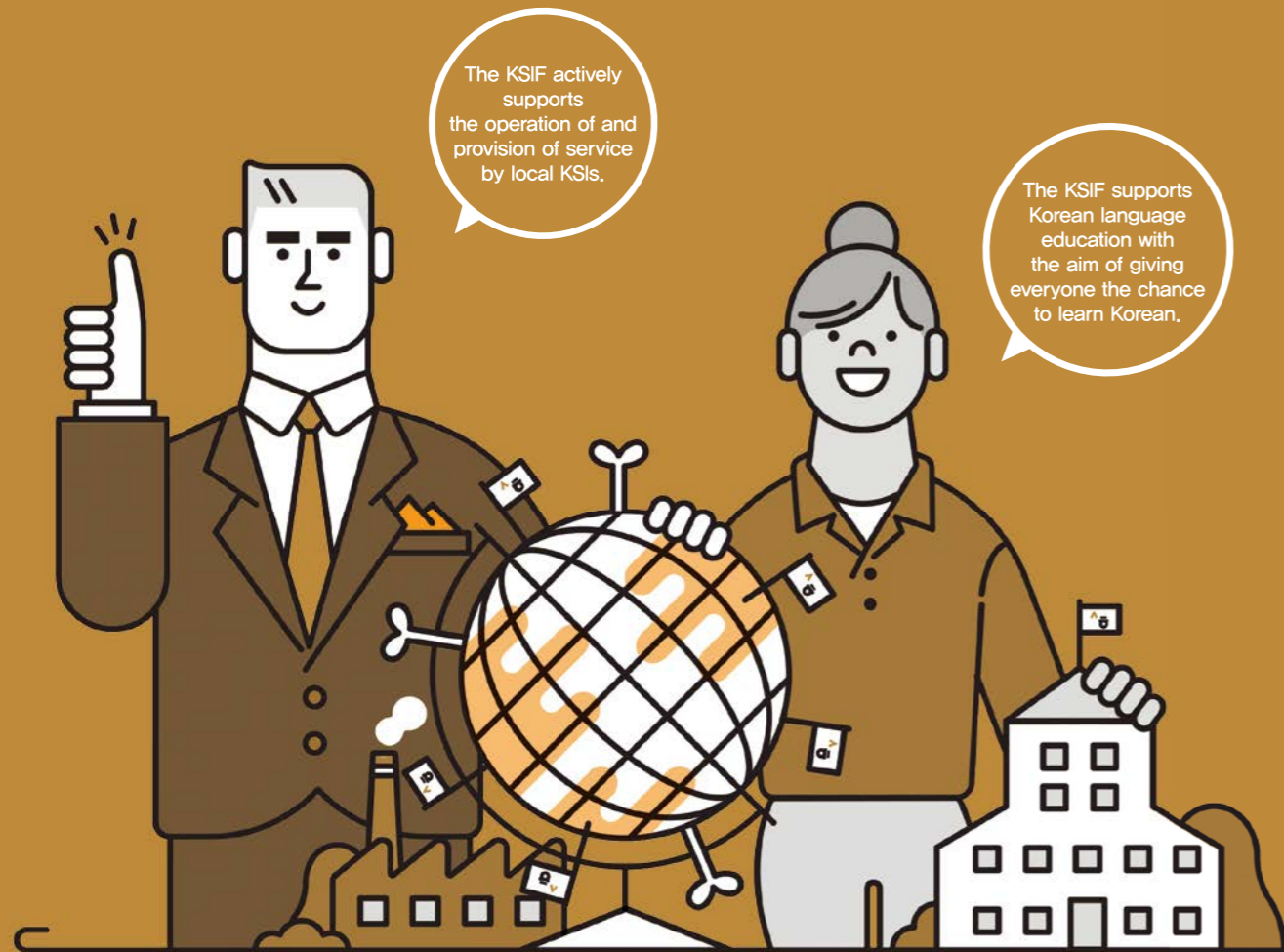
Online monthly newsletter "KSIF News"

Operation of social media channels

The KSIF actively communicates with people interested in the Korean language and culture through SNS channels and the "Nuri-friend" goodwill ambassadors to promote Nuri-Sejong Hakdang.

- Facebook | facebook.com/Sejonghakdang.org
- Blog | blog.naver.com/nurisejong
- Weibo | weibo.com/onlinesejong
- YouTube | youtube.com/LearnTeachKorean
- Instagram | instagram.com/king.sejong.institute

By supporting the KSIs, you can help more people around the world discover their love for Korea!



Contribution methods

One-time donation

You can make a donation at any time.

Regular donation

You can make donations on a continuous and regular basis.

Donation information



donation.ksif.or.kr



02-3276-0700



donation@ksif.or.kr

Major sponsors



